



Conejo Valley Chess News

Nothing wrong with playing like a girl!

After attending several tournaments and starting a chess club at my son's school, I started to wonder why chess is so dominated by men. There are many theories to explain why more men reach the Grandmaster level and have successful chess careers.

One theory suggests that genetics is the primary reason for the discrepancy. Some believe that men out-class women in logic and strategy and the ability to focus is a born trait, whereas women are more inclined to be social creatures and are built to multi-task. Since chess is a game that requires intense concentration and strategic planning, it is a naturally better suited game for men. The theory suggests that it is no different from other fields of study where men dominate, such as engineering and mathematics.

Another theory suggests that upbringing is the root to why a divide exists. Girls are taught not to compete or be aggressive. Intimidation may also play a role as to why the ratio of boys to girls at tournaments is so skewed. Most people start their interest in chess around the age of 8. Developmentally at this age, there is a huge gender separation. Peer acceptance is crucial. We see a huge dropout rate at the age of 14 and 15 among girl chess players. Because the game is so dominated by boys at this age, girls may simply be at a disadvantage early on and don't get the encouragement from parents and peers, nor the necessary practice needed to become proficient.

Some believe there is a disparity because the countries where chess is so highly respected are also the countries where women are undervalued members of society. However, even in the United States where there is more equality between genders, there is not a proportionally significant increase in the number of professional women players.

According to an article "*Why Men Rank Higher than Women at Chess (It's Not Biological)*" written by Lisa Zyga <http://phys.org/news150954140.html>, the answer is simple statistics.

More men play, therefore the chances are much greater for them to move on and become world chess elite. For more statistics, please see <http://en.chessbase.com/post/do-women-have-a-chance-against-men-in-che->

Some believe the reason is based on interest. Men tend to be more competitive and although women can play as well as men, they are not driven to win like men and therefore don't pursue chess competitively. The mere fact that chess mimics war and girls tend to shy away from war games, could have some validity. There is even a Saturday Night Live parody titled "*Chess for Girls*" where Mattel has "femmed" the game up to appeal to girls by dressing the pieces in pink and making the Knights look like unicorns.

Another idea worthy to note is that although there are women who defy the stereotypes and succeed at competitive chess, they are often unable to reach the same level of success as male Grandmasters because child rearing and family life interrupt their chess careers while at their peak.

With these factors in mind, there are some initiations that are being done to help bridge the gender gap and level the chess playing field. For instance, Susan Polgar's foundation is working along with WOM (FIDE's commission for Women's Chess) and Webster University to create more college scholarships, and is sponsoring creative free training programs to help the more serious and talented girls excel to be top-level players.

(continued on page 4)



INTRODUCTION

Hi there,

If there was a chess season, Summer would be it with the US Open and the World Open coming in July.

There are many chess opportunities around town this Summer with camps and tournament play. Chess Park located in Santa Monica promises a great day of Chess by the beach. Hope you stay cool this summer and play lots and lots of chess.

If you are planning to register for the upcoming Millionaire Chess Event in October, please register under the OFF da ROOK team name and get a *\$50 rebate!

All articles and content in this newsletter have been written and edited by me, unless otherwise credited.

Thank you to Larry Smith for your help with editing and proofreading.

If you would like to submit articles, photos or other chess information for future editions, please contact me at:

conejovalleychessmom@gmail.com

I hope you find this newsletter entertaining and valuable. I welcome your feedback.

Now GO PLAY CHESS

Jennifer



1. Which one of these endgame White setups (assuming Black holds a lone king) will always end in a draw?

- king and two knights
- king, knight, and bishop
- king and knight
- king and queen

2. If a knight is attacking the queen and king at the same time, which one of these tactics is being used?

- fork
- pin
- skewer
- check

3. Pins and skewers can be performed by several pieces, but not all. Which one of these pieces cannot pin or skewer?

- rook
- bishop
- queen
- knight

4. Which piece does the fianchetto strategy mainly benefit?

- rook
- queen
- knight
- bishop

TACTICS QUIZ Answers on page 5

5. Want to lose a chess game quickly? Fall for the commonly used Scholar's Mate. Which one of these squares is the target for this checkmate?

- e2 or e7
- f2 or f7
- d2 or d7
- h2 or h7

6. This is a chess situation: suppose White has a rook on d4, and Black's king is on g8, with three pawns on f7, g7, and h7. The pawns and the king are Black's only pieces left. It's Black's turn, so she moves her g-pawn to g5. What kind of checkmate is Black trying to prevent with this pawn move?

- forced mate
- double attack
- smothered mate
- back rank mate

7. Some structures of pawns are good, and some can really give you problems. Which one of these pawn structures is generally the strongest?

- backward pawns
- doubled pawns
- passed pawns
- isolated pawns

8. Now for some chess terminology- which one of these terms describes a situation where it is your turn and this puts you at a disadvantage?

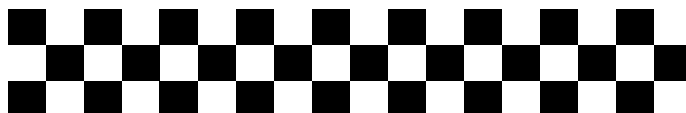
- fianchetto
- zwischenzug
- zugzwang
- en passant

9. Another chess term- what is the term used for an 'in-between move', or a forcing move that is different from what would be normally expected?

- zugzwang
- zwischenzug
- castling
- en passant

10. There are several openings in chess, all characterized by a move, a position, etc. In which opening does White move his knight to f3 on the first move?

- English Opening
- Ruy Lopez
- Reti's Opening
- King's Gambit



The American Chess Academy (ACA) has two locations (Simi Valley and Calabasas) and offers group chess classes Monday thru Friday to kids ages 5 to 16. For schedules and tuition information, please contact Jerry Yee at (818) 915-5572, email him at jy-ee6@socal.rr.com or visit www.achessacademy.org

(continued from page 1)

WGM Natalia Pogonina (in “*Women and Men in Chess – Smashing the Stereotypes*” – Chess News) suggests to make chess more popular among girls, we need to run educational campaigns aimed at parents to demonstrate the benefits of chess. Another key thing is sponsorship at women’s chess events to show that there can be a financial motivation to encourage further chess interest.

Alexandra Kosteniuk, who is both an International Grandmaster and a Women Grandmaster, <http://www.chessblog.com/2009/10/abolish-womens-titles-ridiculous.html> writes in response to an article written in support of abolishing women’s chess titles:

“My goal, as the current women’s world chess champion, and as a chess educator, is to get every girl on the planet interested in chess. And for that I need the same thing every educator has at his fingers – the power to encourage, the power to congratulate, and the power to offer all opportunities that chess has to offer, including titles, however small they are.

I have put my whole life into chess, from the age of 5 I have loved the game, and love it up to this day. I have earned all the FIDE titles that have been available, both women's titles and men's titles, WIM, WGM, IM, GM. I am starting to give the love of chess to my tiny daughter of 2 years old, and I hope she will love it also and will play chess, as I know it teaches skills very useful in school, and later on, in life. I will do all I can to support women's chess, in a positive way, not by attacking or making provocative statements just to attract attention, but in actions.”



Alexandra Kosteniuk

FIDE, the World Chess Federation, awards four levels of Master titles that are open to both women and men. They are:

Grandmaster (GM) 2500+

International Master (IM) 2400+

FIDE Master (FM) 2300+

Candidate Master (CM) 2200+

FIDE also awards a number of titles that are exclusively awarded to female players. They are:

Woman grandmaster (WGM) 2300+

Woman international master (WIM) 2200+

Woman FIDE master (WFM) 2100+

Woman candidate master (WCM) 2000+

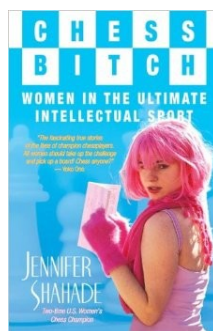
It is of much debate as to whether having women-only titles which have lower standards, can be seen as degrading to women. However, the titles were/are intended to encourage female players and award their achievement, because there are so few female players playing competitively.

For deeper insight into the world of competitive women’s chess, I highly recommend the book *Chess Bitch*, written by Jennifer Shahade. In her book, Jennifer eloquently and with a sense of humor, offers a very candid and personal account of traveling with the women’s international chess circuit. She also provides a brief history and her personal opinions of top women players from Nona Gaprindashvili and the Polgar sisters, to Alexandra Kosteniuk and Irina Krush.

Jennifer Shahade is an American chess player and writer. She is a two-time American women's chess champion and has the FIDE title of Woman Grandmaster. In addition to her book, *Chess Bitch*, she has authored *Play Like A Girl!* Which is a collection of tactical positions from the world's best women chessplayers. She also founded 9Queens, which is a non-profit organization to further the advancement and accessibility of chess to all. She also writes for the magazine *Chess Life* and she is the Mind Sports Ambassador for Poker-Stars (online poker website).

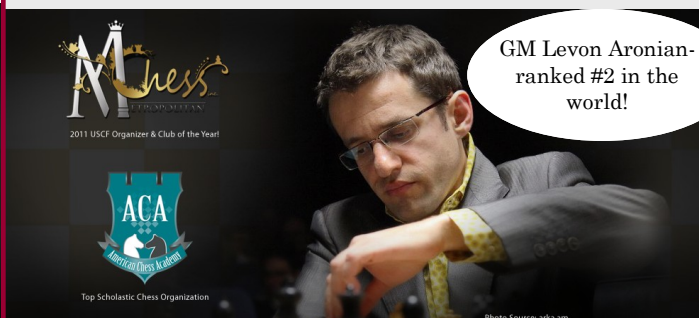
The question should not be if men are better chess players than women. The question should be how to elevate the game in the United States and how to increase the number of women interested in chess so that they can reap the same rewards and benefits from succeeding in what is arguably the most complex and intellectual game in the world. If offering additional chances at women’s titles helps in any way, I am all for it.

- Jennifer Vallens



Susan Polgar, Anna Zatonskih, Irina Krush and Jennifer Sha-

LEARN FROM THE MASTERS!



Metropolitan Chess and ACA are putting on an intensive chess camp July 9-13. The camp will be held at the Hilton in Glendale. Camp includes 5 groups divided by rating levels. U1000, 1000-1399, 1400-1699, 1700-2000 and 2000+. Instruction by GM Levon Aronian, GM Melikset Khachiyan, GM Dejan Bojkov, IM Armen Ambartsoumian, IM Andranik Matikozyan, WGM Tetev Abrahamyan, FM Aviv Friedman and CYCL Founder and Director Jay Stallings. Expert instruction, play and activities. Lunch included.

For more details, visit:

<http://metrochessla.com/camp2014/>

Women's Chess articles and links of interest:

<http://www.susanpolgar.com/indexone.html>

<http://online.wsj.com/news/articles/SB10001424052748703298004574457393421190888>

<http://online.wsj.com/news/articles/SB10001424052748703298004574457393421190888>

<http://adventuresofrabin.blogspot.com/2012/04/women-chess-titles-favorable-or.html>

<http://www.jennifershahade.com/>

<http://womenchessfide.com/index.php/en/>

<http://uschesschamps.com/>

<http://www.theweekinchess.com/chessnews>

Answers to Tactics Quiz:

1. king and knight

King and queen is relatively easy to win with, and king, knight, and bishop is doable. Chose king and two knights? Close, but you can technically win. However, you need a pretty inept opponent.

2. fork

A fork is when one piece attacks two others at the same time. In the example given, the king would move out of check, and then the knight would then capture the queen - often quite shocking to the recipient!

3. knight

A pin is an attack that prevents a piece from moving because then it will expose a more important one to attack. A skewer is an attack that forces a more important piece to move, exposing the less important piece. These require straight lines; no knight move will make this happen.

4. bishop

The b or g-pawn advances one square to allow the corresponding bishop to move into its starting square. This allows the bishop to control the a1-h8 (or h1-a8) diagonal, also known as the 'long' diagonal. It can be a quite useful strategy at times.

5. f2 or f7

These squares are weak because the only piece that guards them is the king. Because of their movement, the bishop and knight can't do a thing to guard them. It can be deadly if a queen lodges itself on that square with support.

6. back rank mate

If White had moved his rook to d8 on his next turn, the king would be trapped by his own pawns, nowhere to run. Moving to g5 gives it an escape route from the rook's check.

7. passed pawns

A passed pawn is one that is not blocked by opposing pawns on the same or adjacent squares, usually leaving it an open path to promote. The other structures are generally weaker.

8. zugzwang

This occurs often at the end of a game, where your only move will force you to accept a draw either by stalemate or insufficient material. This is when chess players wish they could just pass on their move.

9. zwischenzug

Example: You exchange queens, but before taking the queen back, you capture a pawn with check. After the pawn is dealt with, then you grab the queen. The move must be forcing, because otherwise you'll lose the original opportunity - if that capture didn't force check, the queen would just slide on out of trouble.

10. Reti's Opening

This move prevents Black from moving his e-pawn to e5, as it will be captured if she does so.

OFF da ROOK Millionaire Team

***Register under the OFF da ROOK team name. If we get at least 10 people signed up with this team name, all team participants will RECEIVE A \$50 REBATE.**



MILLIONAIRE CHESS

off da ROOK

***\$50 Rebate**

\$1,000,000 GUARANTEED

OCTOBER 9-13, 2014
LAS VEGAS



That's right: a million dollars absolutely guaranteed! No other Open tournament in the long and storied history of chess has ever come close to guaranteeing that kind of prize money. The Millionaire Chess Open will signal a new era in prizes and recognition for players at all levels.

*International Grandmaster
Maurice Ashley*



ENTRY FEE

\$1,000 before Jul 31, 2014
\$1,500 Aug 1 through Oct 8, 2014
\$2,000 Oct 9 through 3:30 p.m. Oct 10, 2014

"Can't wait for the tournament!!! It's going to be a historic event!!! I play 4-5 tournaments a year, but this one will be the most important for me."
Grandmaster Gregory Kaidanov

VISIT WWW.MILLIONAIRECHESS.COM FOR MORE DETAILS

THE MC EXPERIENCE

We believe a chess tournament should be a unique and pleasurable experience, so we're offering amenities that will cater to our players and their guests. It is our intention that anyone who visits our events will walk away with memories that last a lifetime. Some amenities include: gift bags, opening breakfast, red carpet, VIP room, discount to the LINQ Project, 24-hour answering service, and more.



PRIZE FUND FOR TOP SECTIONS

Open section: 1st - \$100,000, 2nd - \$50,000, 3rd - \$25,000, 4th - \$14,000, 5th - \$8,000, 6th - \$4,000, 7th-20th - each \$2,000, 21st-50th - each \$1,000 | **U2350-2499:** 1st - \$40,000, 2nd - \$20,000, 3rd - \$10,000, 4th - \$5,000 | **U2350:** 1st - \$40,000, 2nd - \$20,000, 3rd - \$10,000, 4th - \$5,000 | **U2200, U2000, U1800, U1600:** 1st - \$40,000, 2nd - \$20,000, 3rd - \$10,000, 4th - \$5,000, 5th - \$3,000, 6th - \$2,000, 7th-20th - each \$1,000, 21st-50th - each \$600

ONGOING LOCAL CHESS ACTIVITIES

American Chess Academy

ACA offers group classes at Calabasas and Simi Valley locations Monday-Friday for kids 5-16 years. Visit <http://www.achessacademy.org/> for more information.

Contact: Jerry Yee (818) 915-5572.

Thousand Oaks Chess Club

Meets Mondays 6:00-8:45pm. Goebel Senior Center at 1385 E. Janss Road. Casual play and rated tournament play. All ages welcome. Contact: Cindy Garcia (805) 990-0136 or at thousandoakschess@att.net

Ventura County Chess Club

Meets Mondays at 7pm. Grace Lutheran Church, 6190 Telephone Road, Ventura. Contact: Norman Coats. Contact Phone: 805-701-0010. email: picturethis6@verizon.net.
<http://www.vcchess.com/>

Westlake Village Library

Wednesdays 4-5pm, the Westlake Village library will offer beginning chess with Larry Scott consisting of half hour of instruction, followed by a half hour of play for 6-12 year olds. For more info. contact the library at 818-865-9230.

West Valley Chess Club

Meets Thursdays 6:30-10:30. 7353 Valley Circle Blvd., West Hills. Continuous rated tournaments, blitz, casual play. Contact Jerry Yee (818) 915-5572 or at jyee6@socal.rr.com.

Conejo Valley Parks and Recreation

The Conejo Parks and Rec offer Chess instruction at various park locations. Classes taught by Norman Coats, Jack Cashman and Larry Scott. See <http://www.crpdp.org/> for more details and registration.



Master Simone Liao will conduct chess training classes and organize official USCF chess tournaments during the summer with the Ventura Youth Chess League .

Please check www.VenturaYouthChess.com for details or leave your contact information on <http://venturayouthchess.com/learn.html> to receive updates.



Quinn Creger and I ran a successful beginner's chess camp at the Conejo Valley Chess Club last summer. Quinn is back this summer with Shyam Gandhi to bring a more advance camp to grades K-6 under 1200/unrated. They will focus their lessons on opening strategies, positional maneuverings and endgame techniques thorough game review, puzzles and combinations, following with a tournament on the last day. All proceeds from the camp will help finance trips for both Quinn and Shayam to attend Nationals.

This is a camp not to miss, but please register early because they are only taking the first 24 kids who sign up. Details found on page 14.

Q&A WITH MASTER SIMONE LIAO

How did you get interested in chess and how old were you when you got started?

I started chess in an after-school program when I was in elementary school. During my early years of chess playing, I received guidance and encouragement from many stronger chess veterans, from local players such as USCF National Master Larry Smith, Jerry Yee and his son Michael; Jack Cashman, to international renowned chess figures such as Woman World Champion Alexandra Kosteniuk and Susan Polgar.

What is your highest rating?

2200+.

Do you compete in tournaments?

Yes.

Besides your love of chess, do you have any other hobbies or interests?

I do, but unfortunately, school work takes most of my time.

How did you get started teaching chess?

I have always wanted to introduce chess to the local kids in my community. I started teaching chess a few years ago. I not only cover the chess basics but also show my students active and precise methods of thinking in chess. I am glad to see that many of them have followed these good methods and done quite well in competitions.

Currently I am offering chess classes in Ventura Youth Chess League in Thousand Oaks.

I can be reached at
Simone@VenturaYouthChess.com.

Other than chess, do you play any other games?

Not really, but I wish I could.

The kids are playing variations of classic chess (bughouse and blitz), in your opinion, does playing these types of rapid fire games, help or hurt your game of chess?

Rapid fire games such as blitz and fun activities such as bughouse can be used as good tools to help stimulate and maintain children's interest in chess. However, we need to recognize the difference between the thinking processes in these games and in "regular" chess, and encourage the young players to practice more "regular" chess to develop the depth of their critical chess thinking process.

How often do you study chess (analyze games, read books, or solve chess puzzles)? Also, what part of the game do you think is most important to study (opening, middle or endgame)?

I used to study chess more often when I was younger. I think study of opening, middlegames, and endgames are all important. The critical thing is to understand and apply, not just memorize.

Why do you think chess is dominated by men?

I've never looked deeply in this, but there are a couple clear reasons to me. More males start out playing than females do, and more stay in the game, largely involving social reasons. Also, because of the sheer number of them, guys have a more competitive environment; they usually have to reach higher heights before they can be widely recognized.

How do you think woman approach and play chess differently than men?

I'm not sure about differences of play. I think more of it depends on the individual person rather than gender. There are really tactical and positional players from both genders.

Do you have any suggestions on how to get more girls interested in chess?

I think the general promotion of chess and rewarding female players will help. In the long term, the social environment and the public's perception of chess would need to change for there to be a really big effect. In the short-term, I think rewarding and recognizing female players goes a long way. I know some female players who enjoy playing in girls' tournaments, and that type of event recognizes chess in a more "socially acceptable" environment. Positive recognition goes far.

Do you have any tips for kids to improve their game?

I have lot of suggestions. The most critical word is "consistency" for a player (kid or adult) to succeed in chess - the player needs to be consistent in chess study and chess practices; the player also needs to be consistent in applying the knowledge and skills to every move in competition.



All that matters on the chessboard is good moves.

- Bobby Fischer

SUMMER CALENDAR OF EVENTS

Summer Chess Fest

Newbury Park
June 1, 2014

Las Vegas International Chess Festival

Las Vegas
June 13-15, 2014

<http://www.vegaschessfestival.com/special/schedule.php>

Academic Chess Camp

Northridge
June 16

Jack Cashman Summer Camp

Newbury Park
June 23-27

42 Annual World Open

Arlington, VA
July 2-6
www.chesstour.com/wo14.htm

Pacific Southwest Open

LAX
July 4-6
http://metrochessla.com/tournament_swiss_3/

Metropolitan/ACA Chess Camp

Glendale
July 9-13

Conejo Valley Chess Club Camp

Newbury Park
July 15-17

19th Annual Pacific Coast Open

Agoura
July 17-20
<http://www.chesstour.com/pco14.htm>

US Open

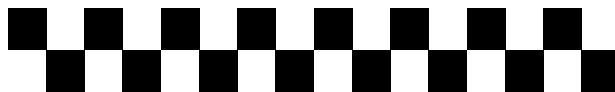
Orlando, FL
July 26-Aug 3
<http://www.uschess.org/tournaments/2014/usopen/>

WEST VALLEY CHESS CLUB

WEEKLY RATED
TOURNAMENTS
THURSDAYS

6:30PM-10:30PM

<http://westvalleychessclub.com/>



THOUSAND OAKS CHESS CLUB

Meets Every Monday
6:00pm-8:45pm
All ages, all levels welcome

Goebel Senior Adult Center
1385 E. Janss Road, Thousand Oaks

The TOCC have frequent USCF rated tournaments. They are usually 5 rounds and are split into 2-3 rating sections, with one tournament game played per week. In the weeks in between tournaments, we have casual play/blitz.

Bring your own boards and clocks for tournament play.

All levels and ages are welcome.

Membership is currently FREE.

Feel free to stop by and check us out! We look forward to meeting you!



For more information,

<http://tochessclub.org/>



GAME BY DANIEL WANG, ANNOTATED BY MASTER SIMONE LIAO



1. c4 {White started with an uncommon first move.} e5 {Black responded correctly.} 2. g3 Nf6 {Good response as it effectively develops the knight.} 3. Bg2 g6 {More accurate is developing with Nc6.} 4. Nc3 Bg7 {The natural follow-up to 3...g6} 5. e3 d6 {A good move as long as castling follows soon afterward.} 6. Nge2 O-O 7. O-O {Black's good response to white's unusual opening gives him an equal game early on.} Nbd7

8. d4 exd4 {Black doesn't have to take, but this exchange doesn't hurt him either.} 9. exd4 Re8 {Nice, controlling the only open file.} 10. Re1 c6 11. Bf4 Qc7 {Not a good idea, as this pins Black's own queen. To defend the d-pawn, Black could just move out the d7 knight with Nb6 or Nf8.} 12. c5 {White takes advantage of Black's mistake.} Nf8 13. Bxd6 {Now White is up a pawn.} Qd8 {A better square for the queen is a5 or d7.} 14. Qd2 b6 {Black obviously felt uncomfortable with white's d6 bishop and tried to drive it away by attacking the supporting c5 pawn with ...b6. However, Black forgot to verify this move.

This move left the c6 undefended; if White plays Bxc6, this gains the pawn and forks the Black rooks. This also shows that the earlier Qd8 was not optimal.}

This is a game my student Daniel Wang played in the last round of 2014 SCCF state youth chess championships. Daniel is playing black against a player more than 200 points above his rating.—Simone Liao

15. Nf4 {White failed to take advantage of black's blunder.} Rxe1+ 16. Rxe1 Bb7 {Black realized his mistake and defended the c6 pawn.} 17. Re7 {A very strong move.} Ba6 18. Qe1 {A little slow, better is Bxc6.} (18. Bxc6 Rc8 19. Bd5 Nxd5 20. Nfxd5) 18... bxc5 19. Bxc5 Rb8 20. b3 Rc8 21. Rxa7 {Now White is still up 2 pawns, plus a powerful rook deep in enemy territory.} Ra8 {The only way to defend the a6 bishop.} 22. Rxa8 Qxa8 23. Bxf8 Kxf8 24. d5 cxd5 25. Ncxd5 Nxd5

26. Nxd5 {White followed the principles of trading to simplify the game.} Bb7 {Black wants to get rid of White's possible discovery, while attacking the White knight. However, White found an easy way to deflect Black's trick.} 27. Nc7 {An excellent move. I think Qb4+ can be trickier.} (27. Qb4+ Kg8 28. Ne7+ Kf8 29. Bxb7 {white could have gained more materials.}) 27... Qc8 28. Bxb7 (28. Qb4+ {forks the king and b7 bishop, easily winning a piece.}) 28... Qxc7 29. Qd1 Be5 30. Bf3 Qa7 31. Qc2 Qc7 32. Qxc7 Bxc7 {The game traded into a winning endgame for White.}



33. b4 Ke8 34. Kf1 {White's idea is to push the queenside passed pawns with the help of the bishop and the king.} Kd7 35. Ke2 Bd6 36. a3 Kc7 37. Kd3 Kb6 38. Kc4 Ka6 39. a4 Kb6 40. a5+ Ka6 41. Be2 Bf8 42. Kb3+ Kb7 43. b5 Bc5 {So far, White's strategy has been working in his favor.} 44. f4 f5 45. b6 Bg1 46. h3 Bf2 47. g4 Be3 48.gxf5 gxf5 49. Bd3 Bxf4 50. Ka4 Be3



51. Bxf5 {A waste of time. White's winning strategy should be simple: since Black does not have connected pawns on the king side and the bishops are in opposite colors, there is no concern about the kingside. All White has to do is to continue using his queen-side pawns, pressuring Black.} (51. Kb5 {Followed with an easy promotion in a few moves with a6 and a7.}) 51... Bxb6 {**A brilliant move to save the game!** Black continued looking for ways to salvage the game and using his endgame knowledge, was able to find a saving idea in this move.} 52. axb6 Kxb6 53. Bxh7 {Since the passed h-pawn would promote to h8 (a dark square) and White's bishop is light-squared, Black needs only to move his king to h8/g7 to draw this game.} Kc7 54. h4 Kd8 55. h5 Ke7 56. h6 Kf7 57. Kb5 Kf6 58. Be4 Kf7 59. Bh7 Kf6 1/2-1/2



About Simone Liao

Simone Liao is a Westlake High School freshman. She has been competing in chess tournaments since she was 7. At the age of 8, she qualified to play as a member of the Us National Youth chess Team in the 2007 World Youth Chess Championship that took place in Turkey.

She earned her Women's FIDE Master title at the age of 9 and the USCF National Master title at the age of 14.

Simon has won several medals for the US in international chess competitions and appeared on the All American Chess Team multiple times.

Simone volunteers her time teaching chess at the Thousand Oaks Chinese School and now coaches students in the Ventura Youth Chess League in Thousand Oaks. She teaches basics as well as prepares them for competitive play. In addition to serving as a chess coach at events, she finds time to compete in tournaments herself.

For more information on the Ventura Youth Chess League in Thousand Oaks, please contact Simone at Simone@VenturaYouthChess.com.

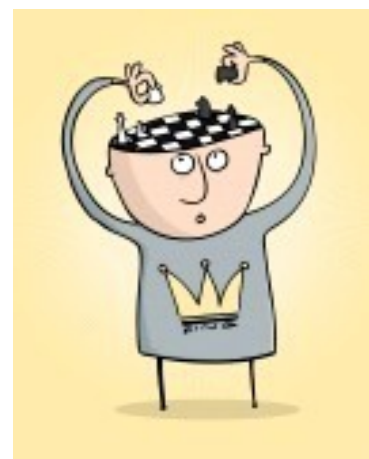
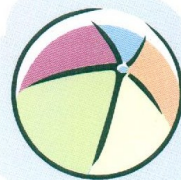
2014 SUMMER KICKOFF CHESS FEST



Sunday, June 1st

11am to 2pm

(Lunch at 1pm followed by prizes!)



Get the most possible wins/checkmates to win prizes!

Trophies or Medals awarded to all players

**Ages 5-12
(beginners only)**

Entry fee: \$25 by May 15

Late entry \$40

Checks made payable to: Jerry Yee

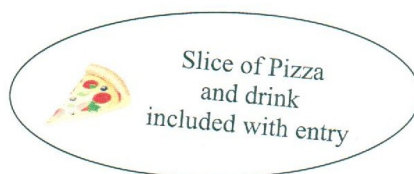
Mail entries to Jerry Yee

23541 Friar Street

Woodland Hills, CA 91367

Contact : Jerry Yee (818) 915-5572

**300 Giant Oak Avenue
Newbury Park, CA 91320
(inside Scrapbook Blessings)**



We are excited to announce that we will be hosting our summer chess classes in our Chess Center in Northridge! We have had a great school year at all of our schools, and an exciting series of Friday Knight Tournaments. The students are having a blast while taking their game to the next level. Summer chess camp is a great opportunity for your child to significantly improve their chess!

Our Chess Center will be offering summer classes Monday - Friday!

Starting June 16th

Classes will be held from:

10am-12pm & 12pm-2pm

*Please note: Each two hour class will offer a different lesson, this way children can stay for both classes!

Our Chess Center is located at:

**8300 Tampa Ave. Suite G
Northridge, CA 91324**

Our summer program will be open to Kinder - 6th grade students of all chess levels! Equipped with multiple rooms and instructors we will be sure to have the right chess lesson to fit your child's needs. Children will receive a lesson, participate in play time and get a snack (granola bar, fruit, and juice/water)!

CLASS RATES:

\$25 for a two hour class (you choose: AM or PM class)

\$45 for a four hour class (includes AM & PM classes)

\$100 for either the AM or PM class for all week! (Mon - Fri)

\$190 will include both AM & PM classes for all week! (Mon - Fri)

*Please note: Packing your child a sack lunch is optional and recommended if your child is participating in both the AM & PM classes.



**The Los Angeles Chess Club
(LACC)**

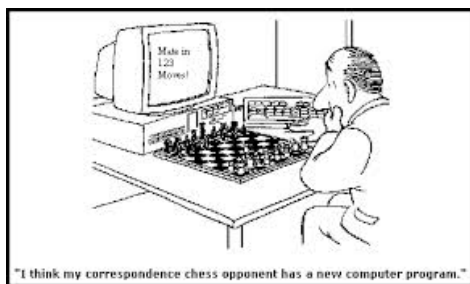
offers both rated and scholastic tournaments weekly. Founder and Director Mick Bighamian can often be found playing and recruiting players at Chess Park in Santa Monica.

For more details visit the LACC website.

<http://www.lachessclub.com/LACC-Tournaments.html>



International Chess Park is located just south of the Santa Monica pier, steps from Muscle Beach. This park attracts locals and tourists alike. Boards are built into tables. Bring your own pieces and clocks. Casual chess, blitz, and occasional summer tournaments. Good players are known to show up on the weekend in the afternoon. Parking is difficult, free parking for two hours at the Santa Monica Place Parking. Great afternoon to pack a picnic lunch and play some chess and people watch.



"I think my correspondence chess opponent has a new computer program."



Summer Chess Camp for students K - 6

All Stars Athletics, 711 Rancho Conejo Blvd., Newbury Park

June 23 - 27, 9:00 - 12:00

\$125 per camper (family rates available)

For Registration (highly recommended; space is limited) or information:

Call All Stars Athletics at 805-498-6200 or

email Jack Cashman (Camp Director) at rationality52@hotmail.com

Great camp for beginners!

Summer Chess Camp in Newbury Park!

Fundraiser for trips to National Tournaments

Open to K-6 under 1200/unrated: Students should know basics of chess and have previous experience, (Such as tournament play, training games, etc.)

Organized by: Candidate Master Leo Creger and Expert Shyam Gandhi

Dates: July 15-17 (Tuesday-Thursday), 1:00-6:00 P.M. each day **REGISTER EARLY, SPACE LIMITED TO 24 STUDENTS**

Location: Conejo Valley Chess Club - 300 Giant Oak Ave. Suite E, Newbury Park, CA, 91320

Program Content: Opening strategies, ideas and goals in the middlegame, endgame techniques, positional maneuverings and sequences, specialized game reviews from our own tournament games, top level games, and casual games. Puzzles and combinations will also be reviewed as additional ways to practice.

As a fun and exciting finish to the camp, there will be a tournament (included in the fee) at the end of the last day where students can practice their skills and have a chance to take home a nice trophy! All participants will receive a medal.

Food: Snacks and drinks throughout the day (fruits, bars, chips, drinks, etc.), however, lunch and dinner are not provided.

Equipment: All chess equipment for the camp will be provided.

How to Register: Please send an email or text to sign up. We will establish a waiting list after reaching 24 students.

Cost: \$125 if registered by **June 2**, \$145 by **June 23**, \$165 by **July 12th (final cut off to allow for planning)**

Payment Method: Mail checks to **300 Giant Oak Ave. Suite E, Newbury Park, CA, 91320** (made out to Leo Creger). We also can accept Paypal and will send an online invoice if you notify us by email.

Contact Information

Leo Creger: cregerquinn@gmail.com, (805)-217-3303, **Shyam Gandhi:** shyam.chess@yahoo.com, (562)-688-0110

Email and text are preferred, however, call if necessary. Include student's name, USCF rating, age/grade, phone number.

If you have any questions, or would like to sign up, feel free to contact either of us. **WE ARE ONLY TAKING THE FIRST 24 KIDS SO SIGN UP AS SOON AS POSSIBLE!**

Cancellation Policy: Registration fee(s) refund less a \$40 cancellation fee by July 8th. No refunds given after July 8th.

We are holding this camp to raise funds for our summer tournament trips to the 2014 World Open and U.S. Open. We look forward to a great time teaching the students and appreciate your support of our program and goals.



Leo Creger (Age 16): Self-taught to the level of Candidate Master. A history of outstanding tournament performances including: 2nd place finish- 2014 National Junior Congress (Age 20 and under), 3rd place finish- 2013 Chicago Open (U2100), Back to back co-champion finishes at the American Open (U2000 in 2012, U1800 in 2011), 4th place finish- 2010 National Open in Las Vegas (U1400), 2nd place finish- 2009 North American Open in Las Vegas (U1300), 2nd place finish- 2009 Pacific Coast Open (U1000), and 2013 L.A. Holiday Scholastic Champion. In addition, I've increased my rating 1400 points since 2009, and currently coach 4 chess students.

Email Quinn to register:

cregerquinn@gmail.com

Shyam Gandhi (Age 14): Top 25 in the nation by age group for the past 8 years, 2 time United States representative in the Pan American Youth Chess Festival in Argentina and Brazil, Top 10 finish in the National Scholastic Grade Championships (5 times), and a USCF rating of 1650 at age 7. I've had several first place finishes in many scholastic and adult tournaments; (i.e. L.A. City Champion, 2 time Southern California Regional Champion, and Ahmedabad, India City Champion. Currently a student of International Master and World Youth U.S. Chess Coach Armen Ambartsoumian.

Email Shyam to register:

shyam.chess@yahoo.com,



Jerry Yee and I have successfully completed our first year with the Westlake Wizards Chess Club at Westlake Elementary.

If you are interested in starting a chess club or chess enrichment at your school next year, please contact me at

conejovalleychessmom@gmail.com



HOW Chess HELPS YOUR BRAIN

People over 75 who play brain-stretching games like chess are less likely to develop dementia.

Playing chess grows dendrites, which conduct brain signals, and the prefrontal cortex, which coordinates planning, judgement and self-control.

Playing chess helps develop creativity by activating the right side of your brain.

Students in a NYC chess program improved reading scores more than a non-chess-playing students.

A study of 4,000 Venezuelan students showed rises in IQ scores after 4 months of instruction.

SOURCES: auschess.org.au | healthylivingnyc.com | championshipchess.net | givewell.org | wisegeek.com | blog.chess.com