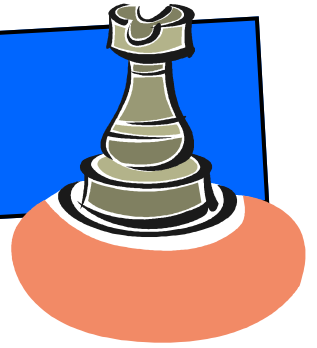


OFF DA ROOK



Issue Three

**Conejo Valley Chess
News for kids**

Slow Down and Think It Through

Inside this issue:

Local Chess Clubs	2
Q&A	3
Chess Flowchart	4
Notation	6
Tournament Info.	8
Puzzle Answers	9

This newsletter has been written
and edited by
Jennifer Vallens.

If you would like to submit arti-
cles, photos or other chess infor-
mation for future editions,
please contact me at:

Conejovalleychessmom@gmail.com

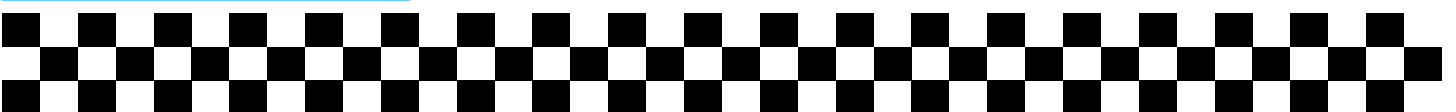
Special thank you to Larry Smith
for his annotation, input and
proofreading. Look out for Q&A
with Larry Smith in our next
newsletter.

“The winner of the game is the player who makes the next-to-last mistake.” So the quote goes. The biggest challenge I face and see kids face when playing chess is that we do not take our time and think our moves through. The game of chess is a series of decision making. If you look at the flow chart on page 4, you will see just how many questions one can ask themselves before making one single move. The best way to slow down and think it through is to record your chess moves in your game and then analyze them. When you record your moves, you must slow down and pay attention to who moved where. When you analyze your game, you can try to make sense as to the why.

So kids, if you want your rating points to go up, slow down and think it through.

See page 6 for how to record your moves and see how a Chess Master analyzes a game on page 7!

*“Don’t get caught between
a ROOK and a hard
place!”*



ONGOING CHESS CLUBS AND CLASSES

American Chess Academy

ACA offers group classes at Calabasas and Simi Valley locations Monday-Friday for kids 5-16 years. Visit www.achessacademy.org for more information. Contact: Jerry Yee (818) 915-5572.

Camarillo Chess Club

Meets Sundays from 1-4pm at the Sportsman Restaurant located at 4426 Central Avenue in Camarillo. All levels and abilities welcome. Contact: Joseph Larievsky (805) 377-0320 joeruns85@gmail.com.

Conejo Valley Chess Club

Check website for tournament information and open chess hours. [Www.conejovalleychessclub.com](http://www.conejovalleychessclub.com)

Thousand Oaks Chess Club

Meets Mondays 6:00-8:45pm. Goebel Senior Center at 1385 E. Janss Road. Casual play and rated tournament play. All ages welcome. Contact: Cindy Garcia (805) 990-0136 or at thousandoakschess@att.net

Ventura County Chess Club

Meets Mondays at 7pm. Grace Lutheran Church, 6190 Telephone Road, Ventura. Contact: Norman Coats. Contact Phone: 805-701-0010. email: picturethis6@verizon.net. Web Site: www.vcchess.com

Ventura Group

A group meets noon to 4:00 p.m. Saturdays in Bank of Books bookstore, 748 E. Main St. Casual play, free instruction. Contact: Rob Radford at 805.204.7154.

Westlake Village Library

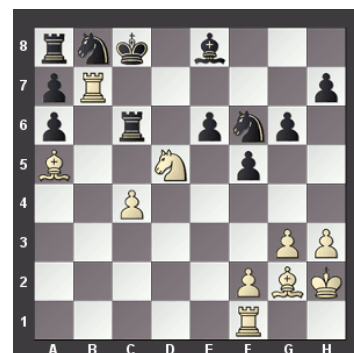
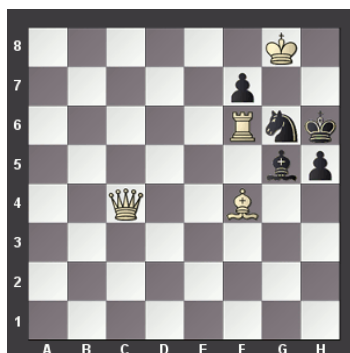
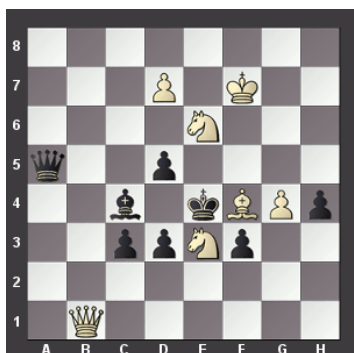
Starting September 11 on Wednesdays at 4pm, the Westlake Village library will offer a half hour of instruction, followed by a half hour of play for 6-12 year olds. For more info. contact the library at 818-865-9230.

West Valley Chess Club

Meets Thursdays 6:30-10:30. 7353 Valley Circle Blvd., West Hills. Continuous rated tournaments, blitz, casual play. Contact Jerry Yee (818) 915-5572 or at jyee6@socal.rr.com.

MATE IN 2 PUZZLES (ANSWERS ON PAGE 9)

White to move in each puzzle



Q&A WITH COACH JERRY YEE (CONT. ON PAGE 5)

Tell me a little about your background and how you ended up teaching Chess.

I managed restaurants for 20+ years before learning how to make a modest living playing poker tournaments online in 2009. The government in 2011 took online poker away from U.S. residents, which was a bit of a blow to me at the time. About a year later, my son's old chess coach, IM Armen Ambartsoumian approached me about opening another ACA location in Calabasas and he wanted me to be the coach. Not really interested in returning to the restaurant business, I jumped at the great opportunity to work with children and teach them chess!

How old were you when you learned the game?

I was 8 or 9 years old.

How did your son learn the game?

At age 4, my son Michael noticed "Searching for Bobby Fischer" was playing on TV. He paid particular attention to the end of the movie and the sounds of the pieces moving and the clocks getting hit by both players. When the movie concluded, he pointed at the TV and asked that we teach him "that". I gradually showed him how to play and within a couple of years, we began driving him to Glendale to train with Coach Armen at the AAA Chess Club. He went on to train with Coach Armen for 7 years, along the way...winning a state elementary school title, a national junior high title, competed in the 2007 World Youth Championships in Turkey (defeating and drawing the top two boys from Russia!) and finally earning his National Master title at age 15.

What is your rating? His?

I am currently around 1900 and Michael is over 2200.

Do you compete in tournaments?

I don't compete very often, but every now and then I muster up the courage!

Do you play chess in your free time for fun?

Sometimes, I play blitz online at chess.com and at my chess club, the West Valley Chess Club.

What is your son doing now? What kind of influence has chess had on his school choice and career path?

Michael is studying at CSUN and majoring in business accounting. Chess probably did not influence those choices, but had a great influence on his self esteem and confidence during his years in middle school and high school. I believe Michael's experience and success in chess instilled a belief in him that he can accomplish anything in life if he puts his mind to it.

What do you think is the best way to improve your game?

The absolute best way is to study tactics and play/analyze your own games. Too many players spend too much time on openings, which I believe is a mistake.

How do you assess when someone is ready to play in tournaments?

With my kids, I require they know some basic tactics and basic checkmates. In the opening, I only require they know the importance of developing pieces, controlling the center and castling.

In addition to basic chess knowledge, I also require that they can handle winning and losing and be good sports about it.

How do you structure your class?

At ACA, the kids play each other and receive constructive feedback from the coach. This takes place until there is 15 to 20 minutes remaining in the class. An interactive lecture is then given with the use of a demo board covering strategy, tactics or theory. At the conclusion of class, chess homework is given to the students for them to solve problems at home.

Do you think playing chess on the computer improves your game?

Yes. The computer allows us to play on the internet against anyone around the world at any given moment and it records the game for us! This gives us the chance to analyze our play afterwards which is invaluable to one's improvement! As far as playing against a computer, it can somewhat help us improve our opening play. I do not recommend playing against a computer because it can be demoralizing.

How do you feel about speed chess games such as Blitz and Bullet? Do you think it improves your chess game?

It can vary from one person to the next. Blitz can help with learning a new opening because you can play several games in a short amount of time. I prefer my kids to avoid playing too much blitz. Some blitz is fine as it can help with improving their time management skills for their longer tournament games. I don't play bullet, but my son does. He loves the pure excitement of it and the chaotic nature that bullet games provide. I must admit, when I watch someone at his level playing bullet, it is amazing how accurate their moves are even with such a short time control. I have seen him take a game straight into a favorable endgame position with a flurry of trades and say that he knew it would favor him.

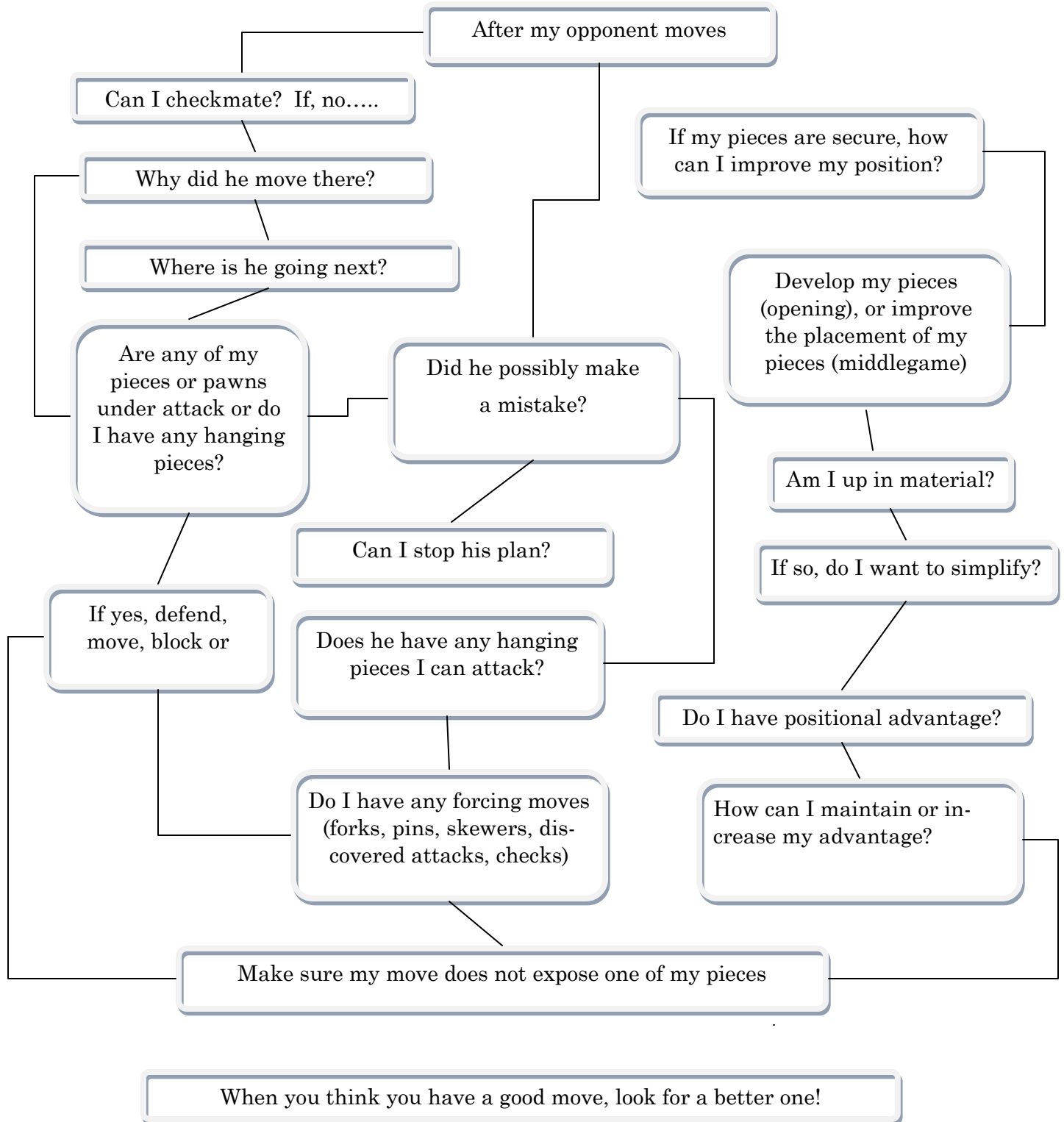
(Q&A continued page 5)



Coach Jerry teaches chess classes in Calabasas and Simi Valley, runs the West Valley Chess Club and is the tournament director for TOCC. In the Fall, he will also be running a chess club at Westlake Elementary.

Jerry is the person who encouraged me to start playing chess with my son Evan. In addition to being a great instructor, he has also become a great friend.

Chess Thought Flowchart



The game of Chess involves a series of decisions. These are just a few thoughts that may run through someone's mind before making a move. Most important is to simply ask yourself "Why did they move there?" and "Are any of my pieces in jeopardy?" Remember to SLOW DOWN and THINK IT THROUGH!

(Q&A with Jerry Yee continued from page 3)

You wear many chess hats (teaching with ACA, running the West Valley Chess Club and working as a Tournament Director with the Thousand Oaks Chess Club), where do you see things heading? Do you have an ultimate goal for your career?

My primary focus is with helping ACA reach as many kids in my communities as possible through our program. The current enrollment at my two locations is under 100 students, but all signs seem to point to an eventual 100+ enrollment and beyond, which was always my goal. In my first month, we had one class and 7 kids, so I am very encouraged with where we are 16 months later. I enjoy running the other clubs and simply want both clubs to continue to thrive for all those chess enthusiasts out there! As far as the ACA scholastic events, I would love to see the turnouts continue to grow (currently averaging over 160 participants per event) and for ACA events to be recognized as the most exciting scholastic tournaments in Southern California

Do you have any advice for parents who want to peak their children's interest in chess?

My biggest tip is for them to just let their kids be around other chess kids and to not worry about game and tournament results so much. Families need to cherish all their chess experiences with their children. I always recall the famous scene in "Searching for Bobby Fischer", where Josh was just upset by a much lower rated player in 7 moves. He and his dad are out in the rain and his dad is asking Josh how it is possible that he (the top rated player) lost in 7 moves. After several more moments of grilling from his dad, Josh, who is shivering and soaking wet from the downpour of the rain sadly says to him, "Why are you standing so far from me?" It is at that moment, his dad remembers to be a dad and not a chess coach. If a child is blessed with chess talent, put expectations aside and enjoy the ride!



Here is Jerry and his son, Michael in 2003.



Jerry teaching an ACA class in Calabasas

West Valley Chess Club
has weekly rated tournaments
Thursdays 6:30pm-10:30pm

<http://westvalleychessclub.com/>



CHESS NOTATION

Keeping a written list of chess moves in a game is called Chess Notation. Every square on a chess board has a name using the letter of the file and the number of the rank. For example, the black King always starts a game on the e8 square.

To record a chess move, you do two things:

Identify the piece being moved AND identify the name of the square to which the piece is moved. (for pawns, you only identify the square to which the pawn moves).

Pieces are always identified by using a capital letter.

There are other symbols used to identify what a move accomplished such as captures and checks. (see below)

There are times when two of the same pieces can move to the same square (two knights or two rooks). When this happens, you identify which piece you are moving by using its file letter. If both pieces are on the same file, write the letter of the piece and the rank number. Ra8xd8 (the Rook that is on file square a8 is the Rook that takes a piece on d8).

K = King

R = Rook

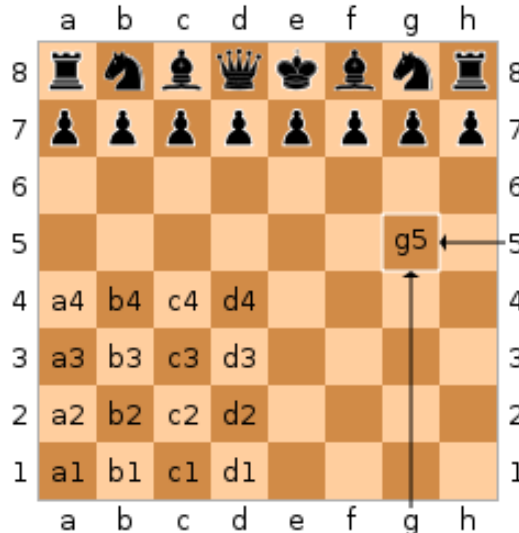
Q=Queen

N= Knight (K is already used)

B=Bishop

Pawns do not have a symbol

Symbol	Description	Example	Description
x	Captures	Bxf6	Bishop takes piece/pawn on f6
+	Check	Bb5+	Bishop moves to b5 and check the King
# or ++	Checkmate	Rc8#	Rook moves to c8 and checkmates
0-0	Kingside castling	0-0	Player castles King-side
0-0-0	Queenside castling	0-0-0	Player castles Queen-side
=	Pawn Promotion	g8=Q	Pawn promoted to Queen on the g8 square
1-0	White won game		
0-1	Black won game		



One of the main reasons to record your chess moves is to be able to analyze your game afterward. To “annotate” is to analyze and make comments to your game.

EVENT				PAGE#	
TOCC				8-12-13	
Round	Board	Section	Time Control	Opening	Pairing
3	11	U1200	120	French	Exchange
White				Rating	Pairing
				575	7
Black				Rating	Pairing
Evan Vailens				1024	4
#	WHITE	BLACK	#	WHITE	BLACK
1	e4	e6	16	Ne2	d3
2	d4	d5	17	Nc3	d2
3	exd5	exd5	18	Re2	Rfd8
4	Nf3	Nf6	19	B3	Qd4
5	Bg5	Be7	20	Qc2	Rde8
6	c4	c6	21	cb	fxc6
7	Bxf6	Bxf6	22	Rxe6	Rxc3
8	cxd5	cxd5	23	Qd1	Rc1
9	Bb5+	Bd7	24		0-1
10	Rxd7+	Nxd7	25		
11	Nc3	Nb6	26		
12	0-0	0-0	27		
13	Re1	Qd7	28		
14	Nb5	Bxc5	29		
15	dx e5	d4	30		
WHITE WON			DRAW (CIRCLEONE)		
Scholastic Chessplayer's Scorebook®					

Sample score sheet

ANNOTATION WITH LARRY SMITH

1. c4

The English Opening.

1... d5

Usually, Black will play 1 ... e5 or 1... Nf6. If she wishes to contest White's c-pawn, better is 1 ... c6 or 1... e6 followed by 2 ... d5. As played, White trades a non-center pawn (the c-pawn) for a slightly more valuable center pawn (Black's d-pawn), and also allows White to gain time attacking the BQ with her QN.

2. cxd5 Qxd5 3. Nc3 Qe6

Better are 3... Qa5 or even 3... Qd8 not interfering with the advance of the Black e-pawn.

4. Nf3

In the opening, development is always good!

4... Nc6

Same comment applies!

5. e4 Nf6 6. d4

This is a very good move in principle, but here it loses the e-pawn which is attacked twice and defended only once.

6... Nxe4 7. d5

Forking the BQ and BN, but Black has a good counterattack!

7... Nxc3+!

Saves the queen by threatening White's!

8. dxe6 Nxd1 9. Kxd1

Better is the "zwischenchach" (in-between check) 9 exf7+! which saves a pawn and weakens Black's pawn structure by isolating Black's e-pawn. An isolated pawn is a pawn that has no pawns on a file next to it, and thus cannot be protected by another pawn.

9... Bxe6

Black is now two pawns up with no weaknesses in her position.

10. Bd2 O-O-O!

Isn't castling great? It's two moves in one, getting the king safe (out of the center) and mobilizing the QR all on the same turn.

11. b3 Nd4

One of the guidelines of middlegame/endgame play is that if you are ahead by one or more pawns, you may want to trade off pieces, but not pawns, to reach a winning K+P endgame. Black pursues this idea very consistently for the rest of the game, making life difficult for White, who fights very hard the rest of the way.

12. Nxd4 Rxd4 13. Be2 Bg4 14. Bxg4+ Rxg4 15. g3 e6 16. Re1 Bb4 17. Bxb4 Rxb4 18. Ke2 Re4+ 19. Kf1 Rxe1+ 20. Rxe1 Rd8

Control the open file with your rook when you can!

21. Kg2 Rd2

Control the 7th rank (the next to last rank from your side of the board) with a rook when you can! Rooks on the seventh rank are very powerful, as they are usually looking to the left and to the right at the row of the opponent's pawns. Rooks like nothing better than to chomp down on pawns!

EVENT: FOCC Summer Knight Swiss 8/25/13					
Round	Board	Status	Time/Control	Opening	
5			60		
White			1100	Pairings	
Black			831	Pairings	
Player: Kuby Henrikken					
#	WHITE	BLACK	#	WHITE	BLACK
1	c4	d5	16	Re1	Bb4
2	cxd5	Qxd5	17	Bxb4	Rxb4
3	Nc3	Qe6	18	Ke2	Re4+
4	Nf3	Nc6	19	Kf1	Rxe1+
5	e4	Nf6	20	Rxe1	Rd8
6	d4	Nxe4	21	Kg2	Rd2
7	d5	Nxc3+	22	a4	Rb2
8	dxe6	Nxd1	23	Re3	Rc2
9	Kxd1	Bxe6	24	Ke3	c5
10	Bd2	O-O-O!	25	Re4	Rc3+
11	b3	Nd4	26	Re3	fxe3+
12	Nxd4	Rxd4	27	Kxe3	Kc7
13	Be2	Bg4	28	Kd3	Kc6
14	Bxg4+	Rxg4	29	Kc4	a6
15	g3	e6	30	b4	b5+

#	WHITE	BLACK	#	WHITE	BLACK
31	axb5+	axb5+	51		
32	Kc3	g5	52		
33	f3	f5	53		
34	Kb3	g4	54		
35	f4	h5	55		
36	Kc3	Kd5	56		
37	Kb3	c4+	57		
38	Kc3	Ke4	58		
39	Kd2	Kf3	59		
40	Kc3	Kg2	60		
41	Kd4	Kxh2			
42	Kc5	c3			
43					
44					
45					
46					
47					
48					
49					
50					

Scoresheet re-written by Jennifer Vallens and game annotated by Chess Master Larry Smith. This was an actual game played by two young players at a recent Thousand Oaks Chess Club tournament.

22. a4 Rb2 23. Re3 Rc2 24. Kf3 c5

White has done a good job in defending her pawns, so Black begins to push her queen-side pawn majority. This is important because with 3 pawns vs 2 on the left-hand (queen-side) side of the board, Black can create a passed pawn that will become a threat to queen.

25. Re4 Rc3+

Either winning a third pawn or forcing White to trade rooks; an unpleasant choice.

26. Re3 Rxe3+ 27. Kxe3

This is a clearly winning endgame, as White will not be able to stop the creation of a passed pawn on the queen-side. Black may not be able to actually queen this pawn, but, at the right time, Black will be able to abandon that pawn and run over with her king to the king-side (the right-hand side of the board from White's point of view) and capture the remaining White pawns.

27... Kc7 28. Kd3 Kc6 29. Kc4 a6 30. b4 b5+ 31. axb5+ axb5+ 32. Kc3 g5 33. f3 f5 34. Kb3 g4 35. f4 h5 36. Kc3 Kd5 37. Kb3 c4+ 38. Kc3 Ke4

As described earlier, but here the Black c-pawn is still guarded by the Black b-pawn, which is even stronger for Black.

39. Kd2 Kf3 40. Kc3 Kg2 41. Kd4 Kxh2

The reason why protected passed pawns (which describes Black's c-pawn) are so powerful is that opposing Kings are powerless against them. Here, White desperately tries to go after the Black b-pawn, but that frees up the Black c-pawn to race to become a queen.

42. Kc5 c3

And White resigns, since Black will queen her c-pawn well before White's b-pawn becomes a threat to queen.

A very logical game by Black. White also fought hard to make this a good battle.

UPCOMING TOURNAMENT INFORMATION



★ **Sunday, September 22**

★ L.A. "Back to School" Chess Championships
 ★ Glendale. Show/hide TLA...
 ★ Site: Maple Park Community Center 820 East Maple Street
 ★ Glendale, CA 91205
 ★ 5 Sections: Unrated, K-3 Under 400, K-5 Under 700, K-8 Under 1000, K-12 Open
 ★ Trophies: 50 trophies will be awarded including Top 10 each section + bonus trophies!!
 ★ All Sections: 5SS; G/30 (Swiss System: everyone plays 5 games against players with approximately the same number of wins and losses after each round)
 ★ Rounds: 10:00 a.m.; 11:15 a.m.; 12:30 p.m.; 1:45 p.m.; 3:00 p.m.
 ★ Ent: 411 N. Jackson St. Apt# 101. Glendale, CA 91206. Make checks payable to American Chess Academy.
 ★ Info: www.achessacademy.org or artmik@charter.net or (818) 640-5974. Food & Beverage tickets for sale at event.

★ **Monday, September 30**

★ The TOCC's Fall Tournament will run for 5 consecutive weeks ending on October 28. 5 round SS, time control 60 with 5 sec delay. 3 sections: Open, U1500 and U700. Location: TOCC. Goelbel Adult Community Center, 1385 E. Janns Road, Thousand Oaks. Bring own boards, clocks and scoresheets. Contact Cindy Garcia at ThousandOaksChess@att.net or 805-990-0136 for registration.

★ **October 11-13**

★ The Los Angeles Open moves to the Agoura Sheraton.
 ★ 5 rounds, 40/110, SD/30, d10 (2-day option, rounds 1-2 G/90, d5).
 ★ **Prizes \$15,000** based on 200 paid entries (re-entries & U1300 Section count 50%, U1000 Section 25%), minimum \$10,000 (2/3 each prize) guaranteed.
 ★ **Top 4 sections entry fee:** \$105 online at chessaction.com by 10/9, \$110 phoned by 10/9 (406-896-2038, entry only, no questions), 3-day \$108, 2-day \$107 mailed by 10/2, all \$120 (no checks, credit cards OK) at site, or online until 2 hours before round 1.
 ★ **GMs, IMs & WGMs:** FREE ENTRY, \$90 deducted from prize.
 ★ **Under 1300 Section entry fee:** \$55 online at <https://www.chessaction.com/index.php?vendor=Continental%20Chess%20Association> by 10/9, \$60 phoned by 10/9 (406-896-2038, entry only, no questions), 3-day \$58, 2-day \$57 mailed by 10/2, all \$70 (no checks, credit cards OK) at site, or online until 2 hours before round 1.
 ★ **3-day schedule:** Reg Fri to 6 pm, rounds Fri 7 pm, Sat 12 & 6, Sun 11 & 4:30.
 ★ **2-day schedule:** Reg. Sat to 9 am, rounds Sat 10, 2 & 6, Sun 11 & 4:30.



Chess Links

- <http://www.fide.com/>
- <http://www.chess.com/>
- <http://www.chessimo.com>
- <http://www.uschess.org>
- <http://www.chesscube.com/>
- <http://www.scchess.com/>
- <http://westvalleychessclub.com/>
- <http://tochessclub.org/>
- <http://www.conejovalleychessclub.com/>
- <http://www.chessbase.com/>
- <http://www.chesskid.com/>
- <http://www.chessgames.com/>

ANSWERS TO PUZZLES

Mate in 2 Puzzle #1

SOLUTION: 1. Nxd5 Kxd5 2. Qb7# 1-0 ... MOVE 1, White's Ne3 captures Black's d5-Pawn; Black's King then captures White's Nd5 ... MOVE 2, White's Qb1 goes all the way up, to b7, resulting in Check-mate, due to White's Ne6 and Bf4 covering the only escape routes.

Mate in 2 Puzzle #2

SOLUTION: 1. Bc1 Bxc1 2. Qxc1# 1-0 ... MOVE 1, White's Bf4 cunningly stays in sight of Black's Bg5, by dropping down to c1; Black's Bg5 accepts the challenge and captures White's Bc1 ... MOVE 2, White's Qc4 can then capture Black's Bc1, to attack Black's King. It's Checkmate because Black's King cannot escape because White's King is guarding the only possible run-away squares, g7 and h7.

Mate in 2 Puzzle #3

SOLUTION: 1. Ne7+ Kxb7 2. Rb1# 1-0 ... MOVE 1, White's Nd5 move to e7, placing Black's King in Check; Black's King sees an easy picking and captures White's Rb7 ... MOVE 2, White's Rook-bait worked and his remaining Rf1 slides across to b1. With White's Ba5 guarding escape route b6 and c7, and Ne7 guarding c8, it's Checkmate.



The American Chess Academy (ACA) has two locations (Simi Valley and Calabasas) and offers group chess classes Monday thru Friday to kids ages 5 to 16. For schedules and tuition information, please contact Jerry Yee at (818) 915-5572, email him at jyee6@socal.rr.com or visit www.achessacademy.org

“Many have become Chess Masters, no one has become the Master of Chess”

(Siegbert Tarrasch)

